

2008-2010 SUPERDUTY XB LED HEADLIGHTS INSTALL GUIDE

WARNING: By reading this document, you agree it is only to be used as an educational guide. Morimoto Lighting nor its dealers make guarantees on any finished results, nor are they to be held responsible for any damage, misuse, or personal injuries. If you are unable to clearly understand and adapt the information below, professional installation is recommended.

PACKAGE CONTENTS



2X HEADLIGHT ASSEMBLIES



1 X FUSE TAP / DRL HARNESS

IMPORTANT: If your vehicle is equipped with anything but OEM turn signals (full assemblies, LED bulbs, or otherwise) in the tail lights or elsewhere: You may experience a hyper flash and/or problem with the sequential signal setting on these headlights. This is not a defect in the headlight, and caused by un-matched impedance with your original vehicle settings.

2008-2010 FORD SUPERDUTY



REQUIRED TOOLS

- RATCHET
- 8MM SOCKET
- 13MM SOCKET
- 19MM SOCKET
- FLAT HEAD SCREWDRIVER OR TRIM REMOVAL TOOL
- PHILIPS HEAD SCREWDRIVER
- NEEDLE NOSE PLIERS

INSTALLATION PROCESS

1. Loosen the two (2) 19mm bolts holding the front bumper.



2. Loosen one (1) 13mm bolt holding the bumper bracket.



3. Repeat steps #1 & 2 on the other side of the truck. Then slide the bumper down.

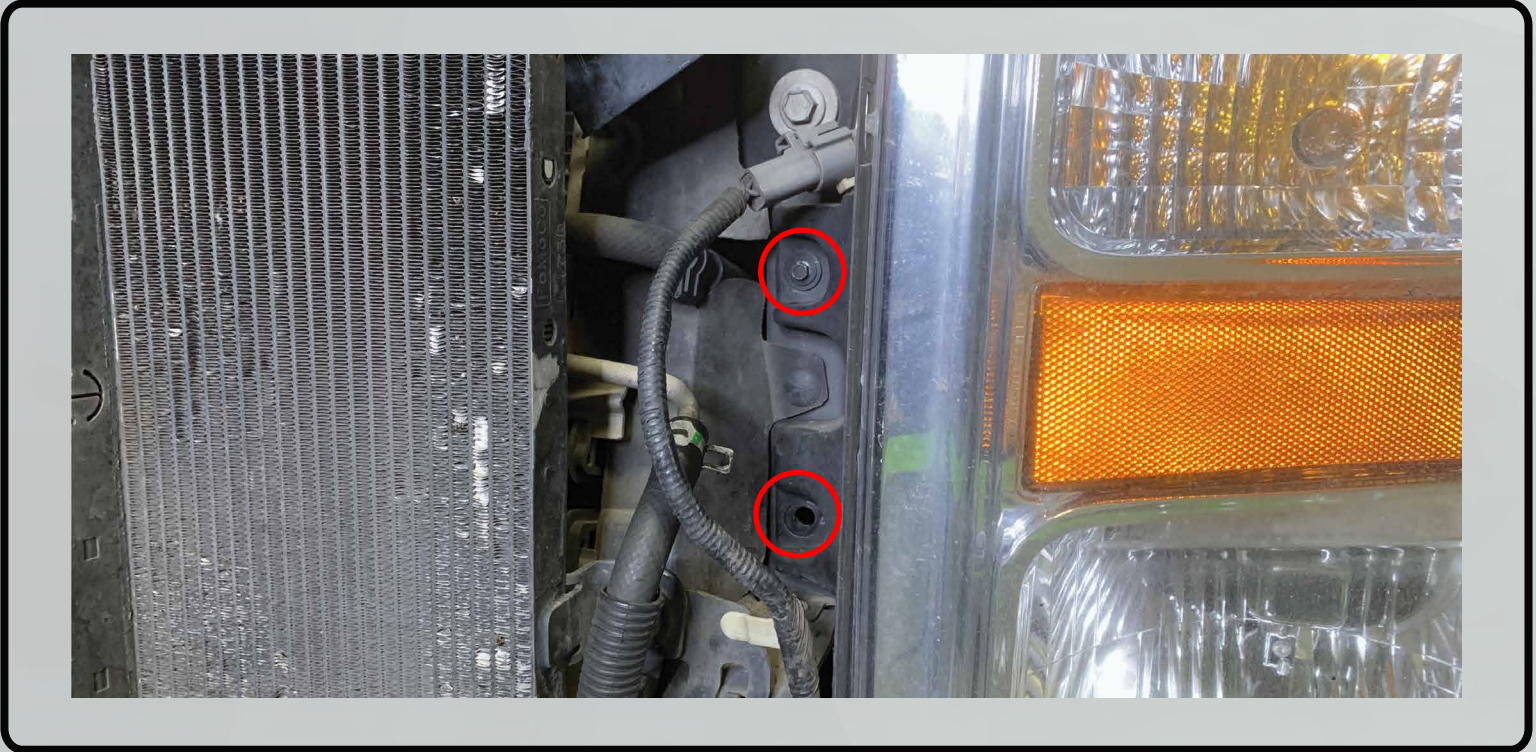
4. Remove one (1) 8mm bolt holding the top bracket of the headlight.



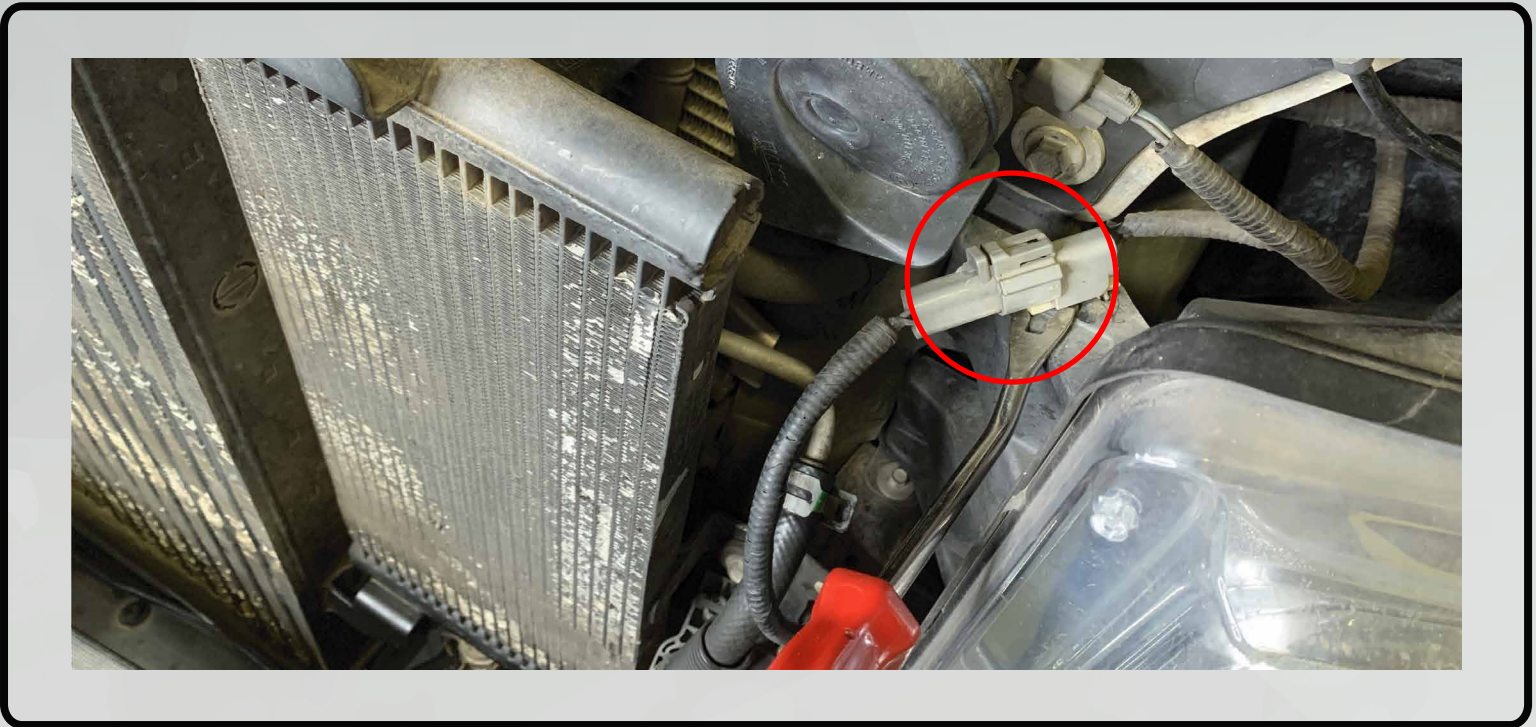
5. Remove one (1) 8mm holding the bottom of the headlight.



6. Remove two (2) 8mm bolts holding the side of the headlight.



7. Pry up on the connector to release it from the headlight housing, and push it to the side.



8. Slide the headlight forward to release the headlight from the truck.

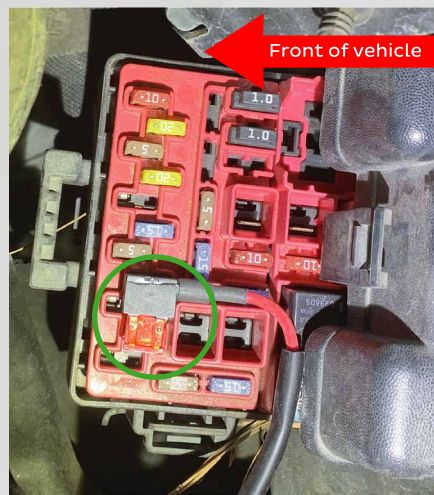
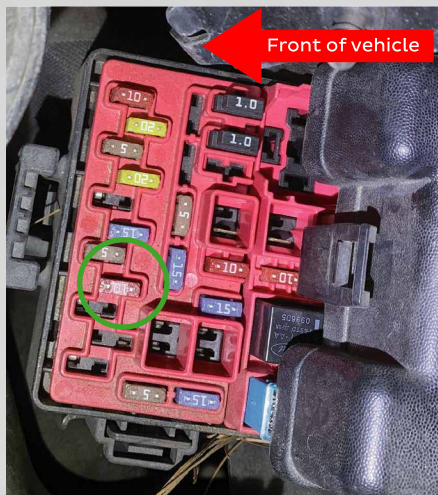
9. Unplug the two bottom connectors by pressing the release tab and sliding the connector off. Remove the turn signal by rotating it counter clockwise and sliding it out of the housing.



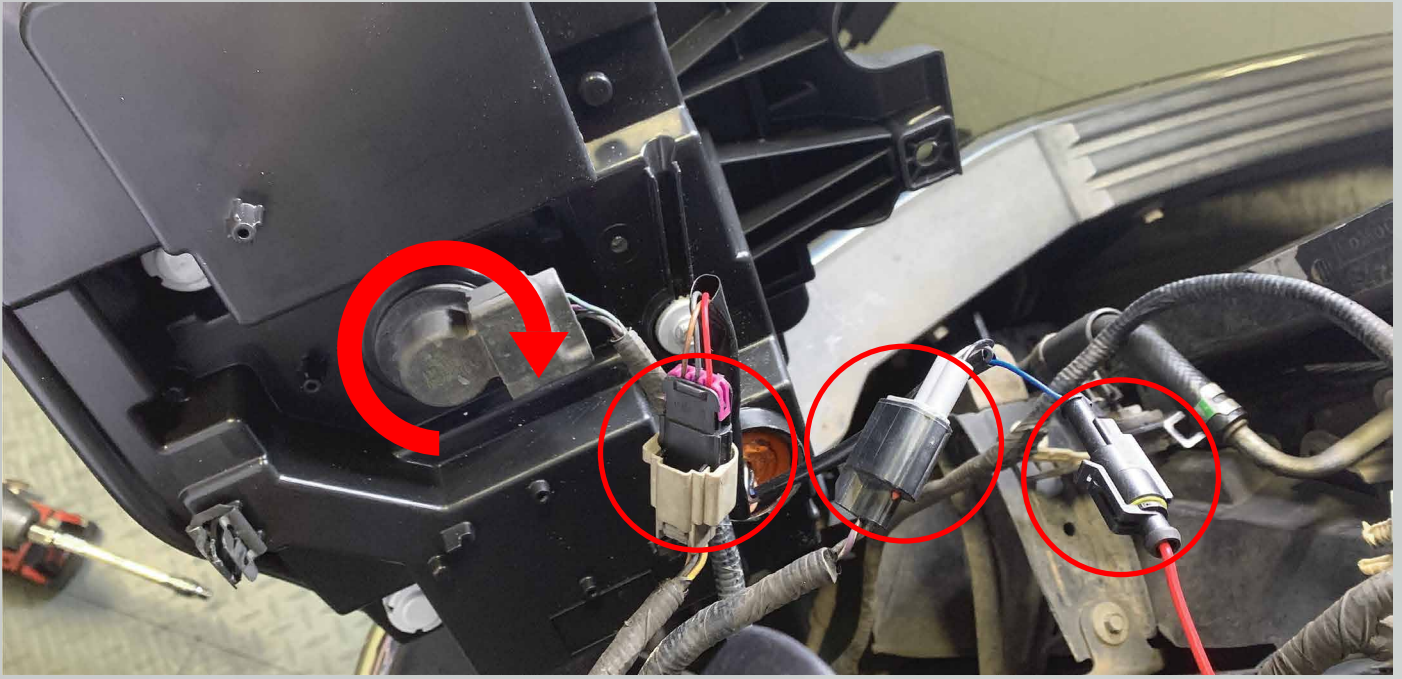
10. Remove headlight from the truck and set it to the side.

11. Repeat steps #4-11 on the other side of the truck.

12. Locate the fuse box on the driver side by the firewall and remove fuse #70. Locate the included DRL harness. Plug the fuse side in slot #70. Run the short part of the harness to the driver headlight area and the long side to the passenger headlight area.

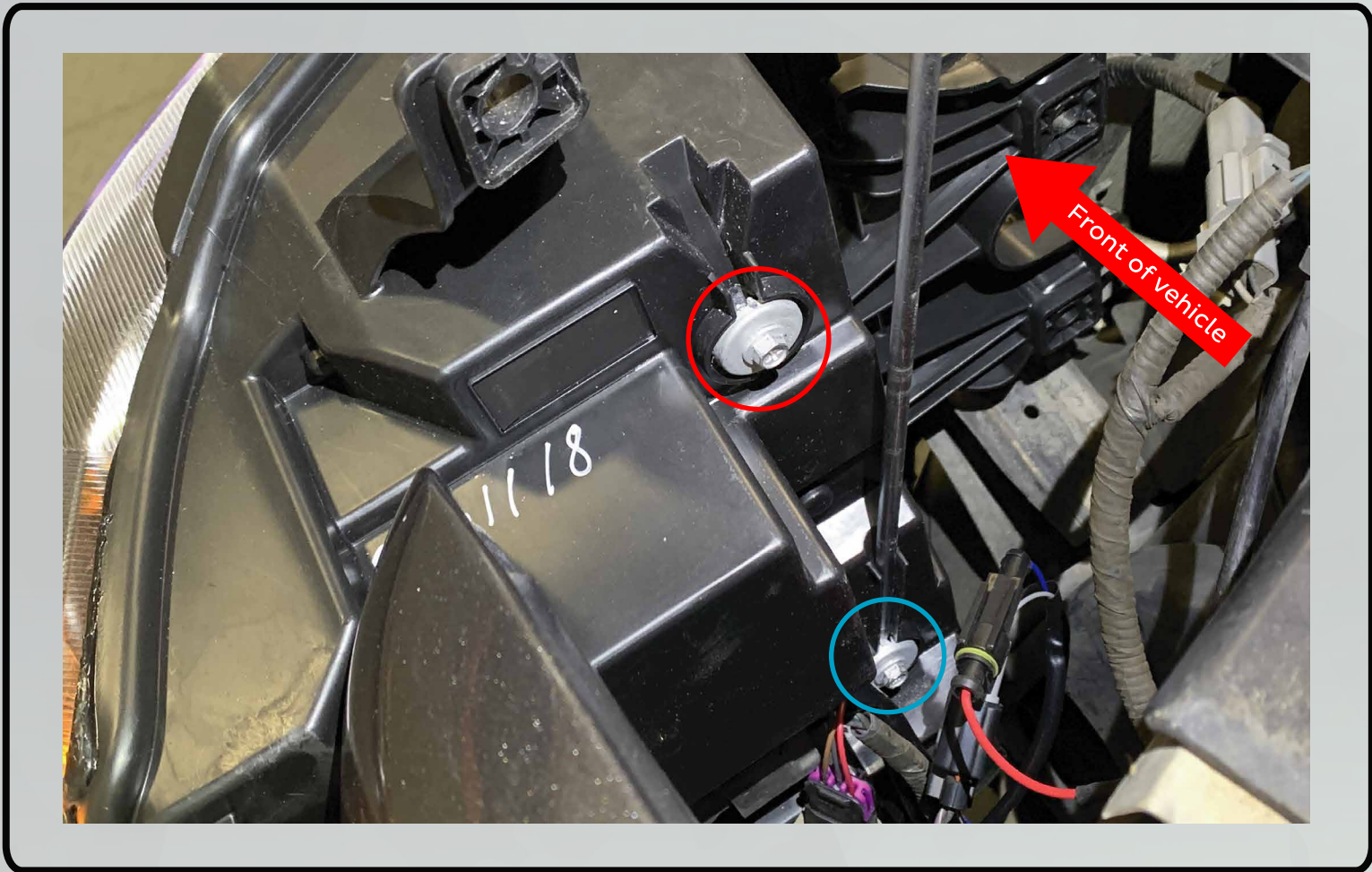


13. Grab one of your new XB headlights, and connect the two (2) connectors to the factory harness, connect the one (1) connector with one wire to the DRL harness, and insert the turn signal socket into the housing and turn clockwise to lock into place.

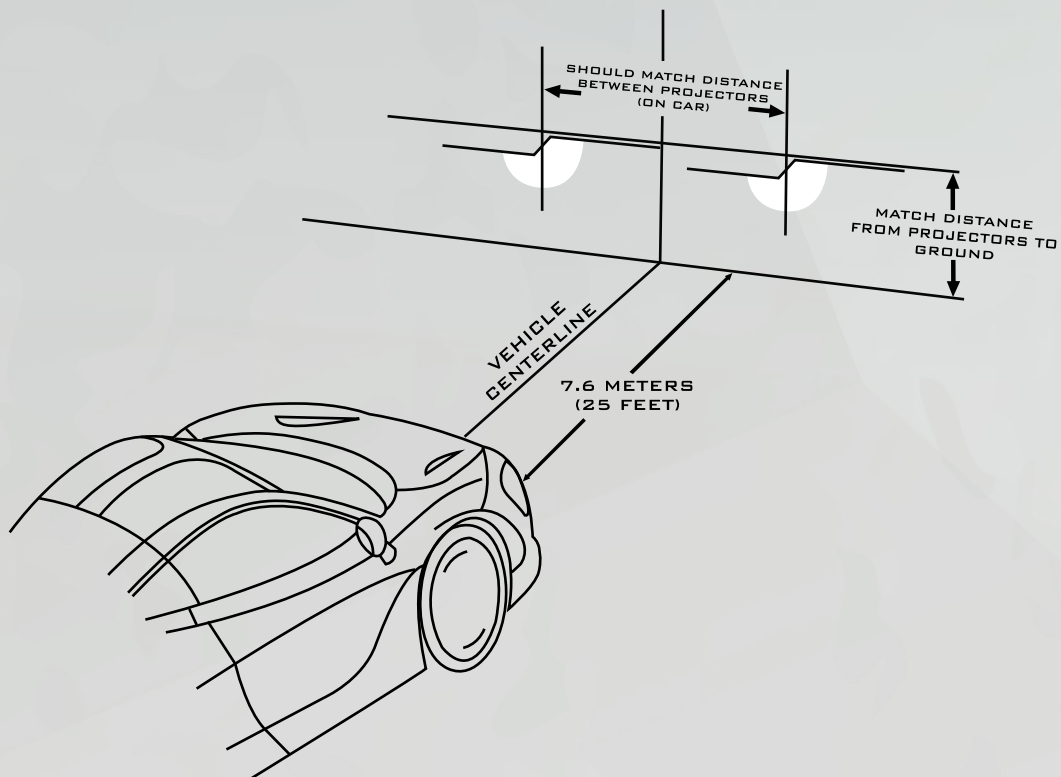


14. Place the headlight in it's place on the truck and thread in the bolts.
15. Repeat step #13 on the other side of the truck.
16. Turn the truck on and test all of the functions to make sure everything works.
17. Reassemble the truck in the reverse order that you took it apart.

18. To adjust the height of the headlight high beam (blue) insert a philips head screwdriver into this slot and rotate it to adjust the beam up or down. To adjust the low beams, use the top screw (red).



- Please refer to the aiming standards below when adjusting your headlight beam.



ENJOY YOUR NEW MORIMOTO XB HEADLIGHTS!